

first for homes

first for property in life - firstforhomes.co.uk

Contact Allan England's Team

01592 752 944



Skibo Avenue, Glenrothes

Offers over £122,000

Skibo Avenue, Glenrothes

Beautifully Presented 3 Bedroom End Terraced Villa Within Highly Desirable Area!

Allan England's award winning team at first for homes are proud to welcome to the market this beautifully presented 3-bedroom End Terraced Vila situated within the desirable area of Pitteuchar, Glenrothes. The property has been tastefully decorated throughout offering move-in condition accommodation comprising: entrance hall, lounge, dining room with patio doors leading out to garden, kitchen and a spacious hallway storage cupboard. There are 3 bedrooms on the upper level and a beautifully upgraded family bathroom. Externally, there are gardens to the front and rear and an outbuilding with power and light. Early viewing is essential to ensure you don't miss out!

HOME REPORT £128,000

EPC RATING E

COUNCIL TAX BAND B

Call first for homes - first for trust... first for service... first for aftercare!

SITUATION - Glenrothes is regarded as one of the most successful Towns in Scotland with a wealth of local amenities including Kingdom Shopping Centre as well as sport and leisure at Michael Woods and a multi-screen cinema. Glenrothes boasts its very own 18-hole Golf course and both Primary and Secondary schooling are available. For the commuter the A92 allows swift access to Edinburgh and there are railway stations at both Thornton and Markinch.





SITUATION – Glenrothes

HALLWAY

LOUNGE 17'5" x 11'2" approx. (5.32m x 3.42m approx.)

DINING ROOM

8'10" x 8'0" approx. (2.71m x 2.46m approx.)

KITCHEN 8'11" x 8'6" approx. (2.73m x 2.61m approx.)

HALL STORAGE CUPBOARD

UPPER LEVEL

BEDROOM 1

15'9" x 8'5" approx. (4.81m x 2.57m approx.)

BEDROOM 2

11'1" x 9'6" approx. (3.40m x 2.91m approx.)

BEDROOM 3

7'10" x 7'2" approx. (2.40m x 2.20m approx.)

FAMILY BATHROOM

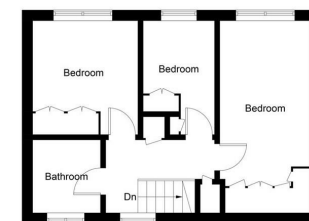
6'1" x 5'11" approx. (1.87m x 1.82m approx.)

REAR GARDEN

INFORMATION



Ground Floor



First Floor

Illustration for identification purposes only, measurements are approximate, not to scale. Forthra.co © (D1187750)



Information

These particulars are prepared on the basis of information provided by our clients. We have not tested the electrical system or any electrical appliances, nor where applicable, any central heating system. All sizes are recorded by electronic tape measurement to give an indicative, approximate size only. Prospective purchasers should make their own enquiries – no warranty is given or implied. This schedule is not intended to, and does not form any contract.

FREE Valuation

Selling Your Home?

Choose first for homes - a highly experienced estate agency team you can trust to sell your home at the highest possible price. Offering fantastic savings on selling fees, with no compromise on service, free professional photography highlighting your home in its best light, first for homes will be your first choice. Contact us today to arrange your appointment.



first for trust



first for service



first for aftercare

first for homes
first for property in life - firstforhomes.co.uk

Contact Allan England's Team
01592 752 944

32 North Street, Glenrothes, Fife KY7 5NA
Fax: 01592 807947
sales@firstforhomes.co.uk
www.firstforhomes.co.uk